



Knife Valves (ANSI 150 & PN10) LUG CONSTRUCTION (Cast Iron)



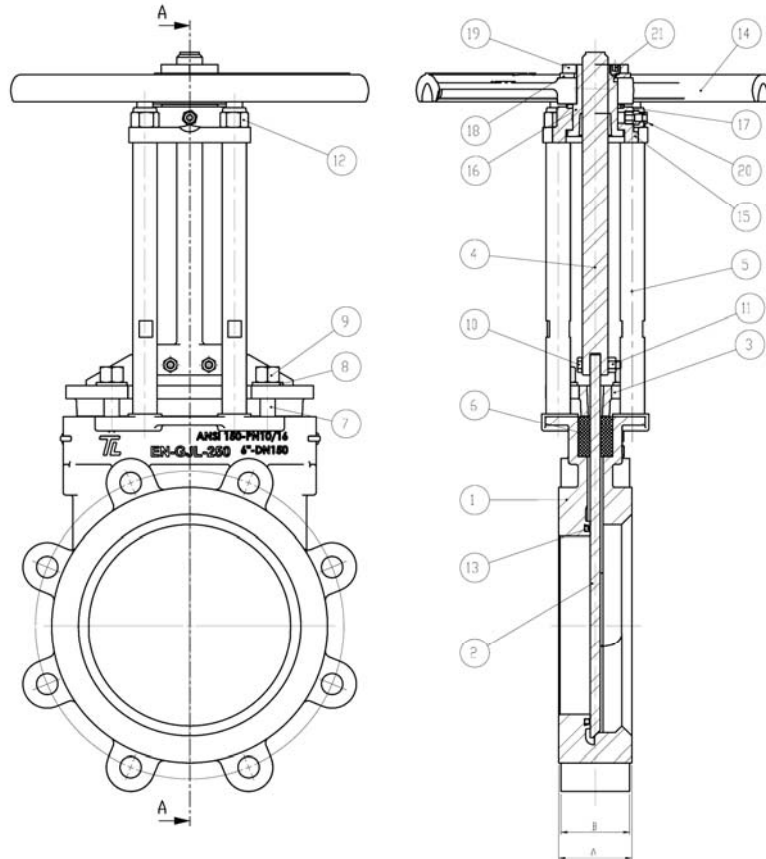
Authorized Distributor

FIG

F8115



Knife Valves (ANSI 150 & PN10) LUG CONSTRUCTION (Cast Iron) *Parts and materials*



Item	Description	Material
1	Body	EN-GJL-250
2	Knife	AISI 304
3	Gland Flange	EN-GJL-250
4	Stem	ASTMA351
5	Stanchion	AISI 303
6	Packing	TEFLON
7	Gland Packing Stud	AISI 304
8	Gland Packing Washer	A105
9	Gland Packing Nut	Carbon Steel
10	Coupling Bolt	Carbon Steel
11	Coupling Nut	Carbon Steel
12	Stanchion Nut	Carbon Steel
13	Resilient Seat O-Ring	VITON
14	Handw heel	WCB
15	Bridge	WCB
16	Yoke Sleeve	1.0737 + HT65
17	Thrust Washer	Carbon Steel + HT65
18	Washer	Carbon Steel
19	Handw heel Nut	Carbon Steel
20	Lubricating Nipple	Carbon Steel
21	Flat Point Set Screw	Carbon Steel

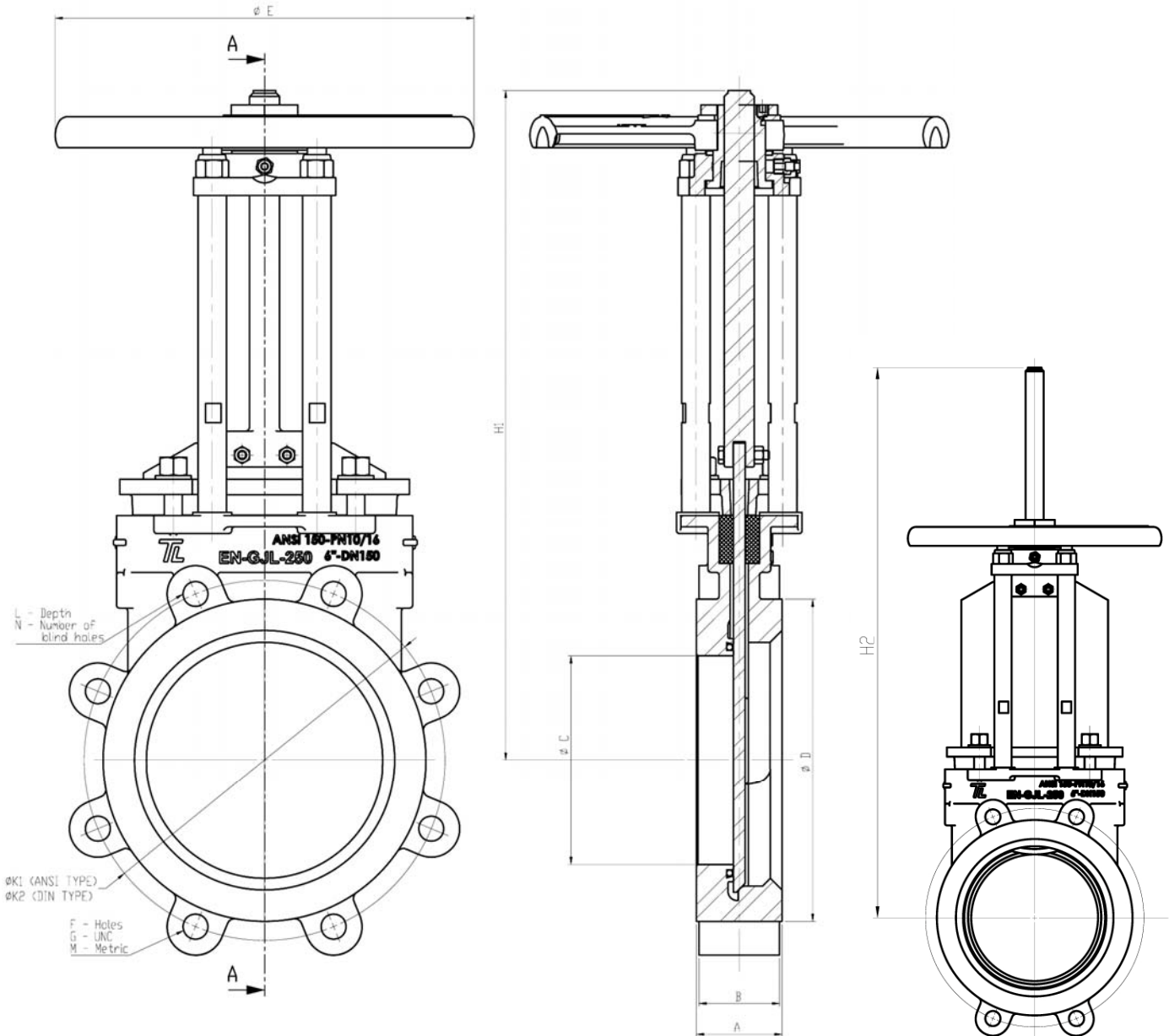
Authorized Distributor

FIG

F8115



Knife Valves (ANSI 150 & PN10) LUG CONSTRUCTION (Cast Iron) Dimensions



DN	A	B	ØC	ØD	ØE	F	G	M	H1	H2	ØK1	ØK2	L	N	Weight
						ANSI 150 / PN10	ANSI 150	DIN PN10			ANSI 150	DIN PN10			
2" (DN50)	1.9	1.7	1.9	3.6	11.3	4/4	5/8"-11 UNC	M16/M16	11.2	13.4	8.3	4.9	0.51	2/2	13
3" (DN80)	2.0	1.9	2.7	5.0	11.3	4/8	5/8"-11 UNC	M16/M16	12.3	15.7	6.0	6.3	0.24	2/2	23
4" (DN100)	2.0	1.9	3.6	6.2	11.3	8/8	5/8"-11 UNC	M16/M16	14.6	18.8	7.5	7.1	0.39	2/2	30
6" (DN150)	2.3	2.1	5.5	8.5	11.3	8/8	3/4" - 10 UNC	M20	17.7	23.8	9.5	9.5	0.51	2/2	52
8" (DN200)	2.8	2.6	7.2	10.6	11.8	8/8	3/4" - 10 UNC	M20	22.4	30.5	11.8	11.6	0.71	2/4	93
10" (DN250)	2.8	2.6	9.0	12.8	11.8	12/12	7/8" - 9 UNC	M20	26.0	36.0	14.3	13.8	0.71	4/4	120
12" (DN300)	3.0	2.9	11.3	15.0	14.0	12/12	7/8" - 9 UNC	M20	31.7	43.7	17.0	15.8	0.71	4/4	185
14" (DN350)	3.0	2.9	13.1	16.7	15.7	12/16	1" - 8 UNC	M20	39.8	53.1	18.8	18.1	0.63	4/6	311
16" (DN400)	3.5	3.4	14.8	21.3	19.7	16/16	1" - 8 UNC	M24	44.6	59.9	21.3	20.3	0.91	6/6	410
18" (DN450)	3.5	3.4	16.5	21.0	19.7	16/20	1 1/8" - 7 UNC	M24	48.0	65.4	22.8	22.2	0.75	6/8	489
20" (DN500)	4.5	4.4	18.3	23.0	23.6	20/20	1 1/8" - 7 UNC	M24	52.2	71.7	25.0	24.4	1.10	8/8	700
24" (DN600)	4.5	4.4	22.0	27.2	28.3	20/20	1 1/4" - 7 UNC	M27	59.9	83.3	29.5	28.5	0.98	8/8	998

Dimensions in inches and weight in lbs.

Authorized Distributor

FIG
F8115



Knife Valves (ANSI 150 & PN10) LUG CONSTRUCTION (Cast Iron)

General Characteristics, Torque & KV, Pressure Rating

General Characteristics

Flanges match ASME (ANSI) B 16.5 – 150lbs and EN-1092 PN10

All Knife gate valves are built and tested in accordance with MSS-SP81 and TAPPI T1S 405-8

- Directives: **DIR 98/37/CE (MACHINES)**
 DIR 97/23/CE (PED) Fluid: Group 1(b), 2 (Cat.I, mod. A)
 DIR 94/9/CE (ATEX) Group II, Cat. 3: zones 2 and 22

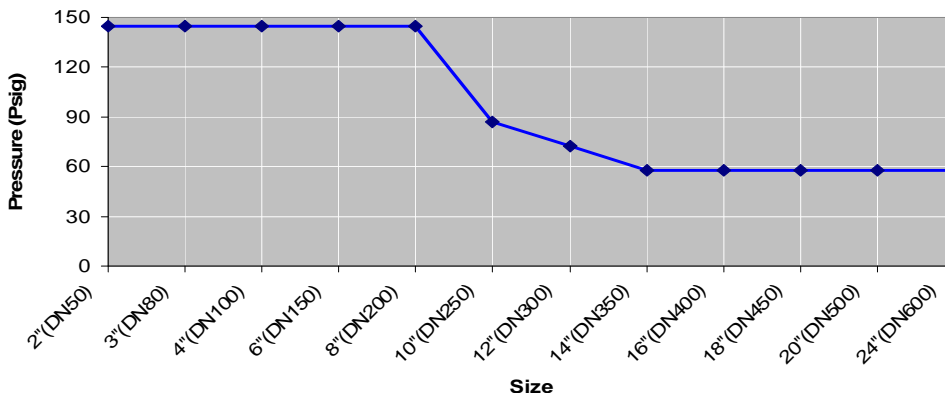
Torque Values in ft lbf

VALVE SIZE	AT DIFFERENTIAL PRESSURE		VALVE SIZE	AT DIFFERENTIAL PRESSURE	
	Class 150 & PN10			Class 150 & PN10	
2" (DN 50)	7.89		12" (DN300)	208.36	
3" (DN80)	8.33		14" (DN350)	360.67	
4" (DN100)	9.15		16" (DN400)	475.73	
6" (DN150)	29.13		18" (DN450)	585.62	
8" (DN200)	83.34		20" (DN500)	815.74	
10" (DN250)	104.00		24" (DN600)	1,231.73	

Cv Values in Gallons/min

VALVE SIZE	PERCENTAGE OPEN									
	10%	20%	30%	40%	50%	60%	70%	80%	90%	100%
2"	23	45	64	84	99	118	133	143	153	163
3"	69	140	197	251	306	355	399	434	468	493
4"	118	232	335	429	518	602	680	745	789	838
6"	281	557	799	1,011	1,233	1,440	1,612	1,770	1,893	1,992
8"	498	1,001	1,420	1,810	2,209	2,564	2,879	3,170	3,382	3,560
10"	799	1,593	2,278	2,909	3,540	4,102	4,615	5,069	5,414	5,700
12"	1,272	2,529	3,619	4,610	5,611	6,518	7,327	8,062	8,599	9,053
14"	1,464	2,924	4,181	5,335	6,479	7,524	8,446	9,279	9,950	10,453
16"	2,110	4,216	604	7,692	9,329	10,882	12,253	13,441	14,358	15,088
18"	2,766	5,522	7,889	10,044	12,258	14,190	15,946	17,514	18,707	19,723
20"	2,603	7,159	10,226	13,066	15,808	18,362	20,728	22,720	24,328	25,639
24"	5,315	10,611	15,206	19,318	28,460	27,316	30,886	31,793	36,063	37,670

Working pressure



Authorized Distributor

FIG
F8115